

# PRODUKT MANUAL

wersja 2023-06-07

## ELECTRIC OUTBOARD

### WICHER-65



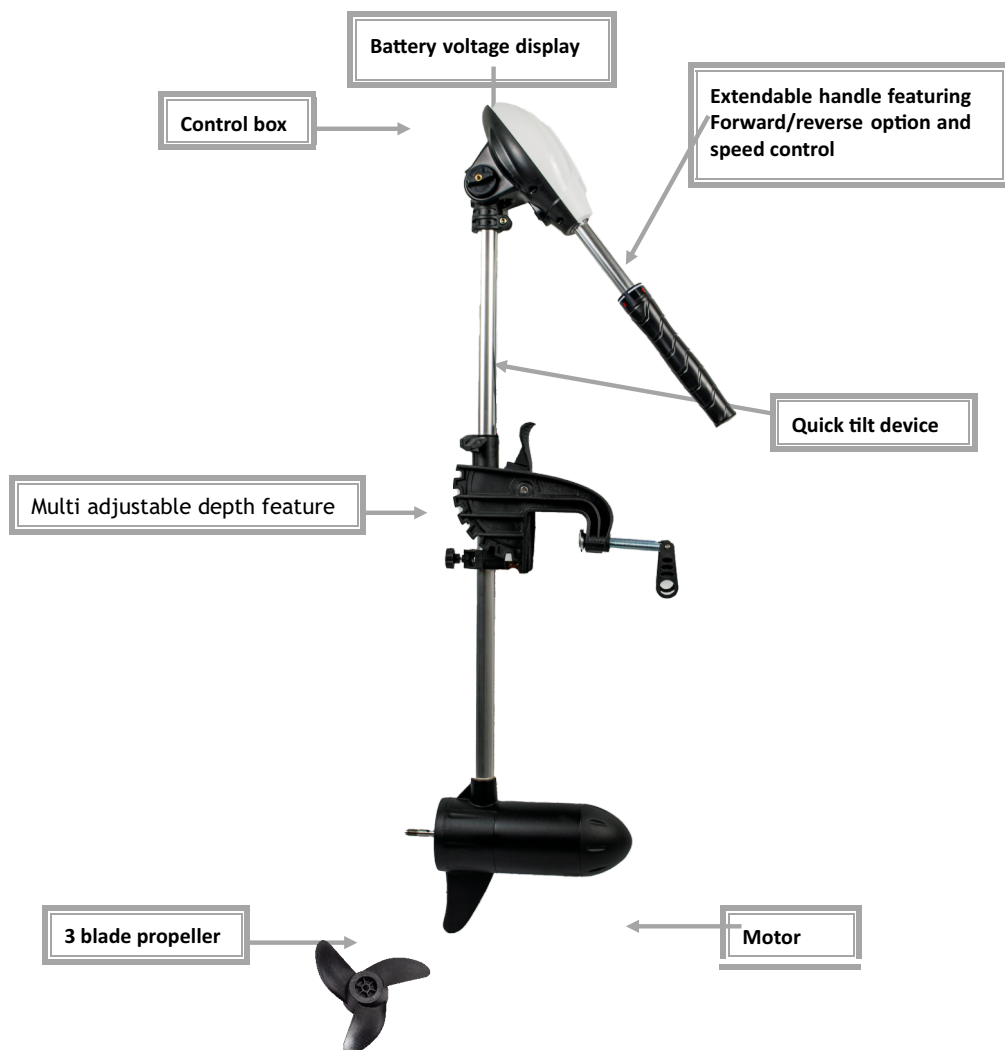
**VOLT**  
**POLSKA**

VOLT POLSKA Sp. z o.o.  
ul. Świebrowska 3  
81-877 Sopot  
[www.voltpolska.pl](http://www.voltpolska.pl)

[pomoc@voltpolska.pl](mailto:pomoc@voltpolska.pl) | [hurt@voltpolska.pl](mailto:hurt@voltpolska.pl) | (58) 500 85 62

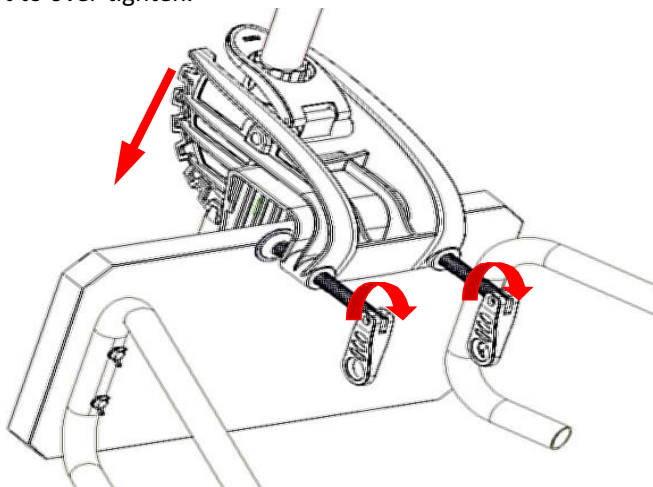
Thank you for purchasing **Electric Outboard BRYZA 60** from VOLT Polska. Please read this user manual before starting the device.

## KEY FEATURES



# Installation

Attach the motor to the stern of the boat and tighten both mounting bolts securely while care not to over-tighten.



To adjust the angle of the motor after attachment, hold the motor head with one hand and press the position at the top of the mounting bracket with your other hand. Press and hold the positioning pin until the desired angle has been reached, next release the pin and ensure it has been locked.



## DEPTH ADJUSTMENT

Hold the motor shaft with one hand, loosen the depth adjustment screw and set the motor to the desired depth, then retighten the adjusting screw securely.



## SPEED CONTROL AND ADJUSTING ANGLE

The motor featuring five forward and three reverse speeds. Turn the handle clockwise to move forward and anti-clockwise to go backward.



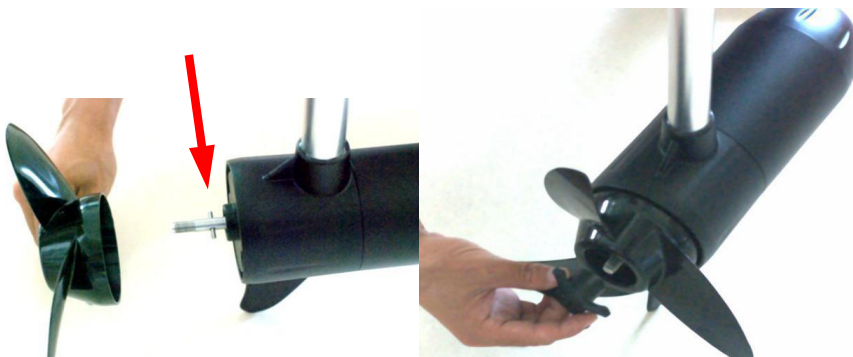
Untighten the knob and place the engine head in the required angle. Tighten the knob to secure its position.



## DETACHING THE PROPELLER

**Before doing anything with the propeller, ensure the cables to the battery are disconnected.**

Detaching the propeller is a simple matter of unscrewing and removing the locknut using the special tool supplied. When doing this, take hold of propeller to stop it turning. Once the locknut is removed, you will be able to slide the propeller off. When putting the propeller back on, verify there is a proper fit of the groove and shear pin otherwise the propeller will not be locked in place.



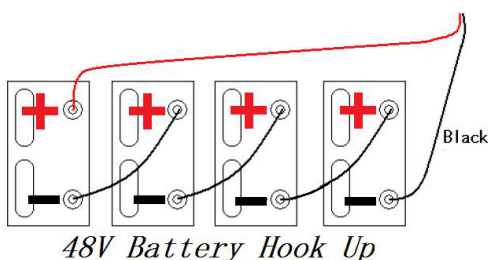
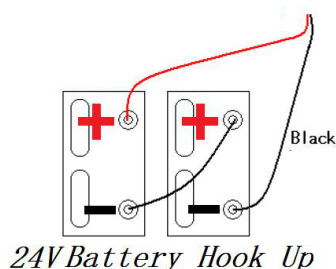
# ELECTRICAL CONNECTIONS

Before connecting the motor's cables to the battery terminals, ensure all switches are in the OFF position and stand clear of the propeller.

Connect the red cable to the positive (+) terminal, and black cable to the negative (-) terminal, making sure the terminals are clean before doing this. A clean connection will minimize power wastage and give you maximum power from the battery.

The battery should be kept in a well-ventilated location. We recommend using a special deep cycle marine battery, agm or li-ion batteries for optimal performance.

24V and 48V battery connect instruction:



## Technical data:

**SUPPLY VOLTAGE: 12 [VDC]**

**MAXIMUM CURRENT: 65 [A] +-3%**

**MAXIMUM POWER: 770 [W] +-3%**

**SPEEDS: 5 forward / 3 reverse**

**SPEED: 3 blades**

**CONTROL HANDLE adjustable position**

**LED DISPLAY: current battery voltages [W].**

**WEIGHT: 10.5 [kg] +-3**

# TROUBLESHOOTING

## PROBLEM

## POSSIBLE CAUSE/SOLUTION

Speed loss

1. Check for line or weed on propeller
2. Check battery status.
3. Check terminals on battery.

Motor noise/shake

1. Check propeller for line or weed.
2. Check to see propeller is secure and not damaged.
3. Check shaft to ensure it is not bent.

Detach propeller and run motor visually to ensure shaft is not shaking. If shaft is damaged contact your retailer.

Loss of speed setting

1. Check all wiring connections.
2. Speed coil in motor may be burned, contact your retailer.

Tight steering

1. Loosen counterforce screw, apply lubricant and readjust.

**For problems not listed, contact your retailer**

## MAINTENANCE

At the end of the day, wipe the motor down with a cloth soaked in warm water and then rinse unit. Always check the propeller is clear of line or weed, regularly check all nuts, bolts and screws and lubricate all moving parts with an aerosol lubricant. Clean terminal connections regularly and check for frayed wires or loose connections.

## STORAGE

When storing the motor, lubricate all moving parts and screws and store in a well-ventilated, dry area. Do not leave the motor outside in winter for long periods, as this will damage the permanent magnet in the motor unit.

# WARRANTY CARD

|                           |  |
|---------------------------|--|
| <b>DATE OF PURCHASE</b>   |  |
| <b>SHIPPING ADDRESS</b>   |  |
| <b>SIGNATURE / STAMP</b>  |  |
| <b>DAMAGE DESCRIPTION</b> |  |
| <b>SERVICE COMMENTS</b>   |  |

FILL IN IF NEEDED

(\*) Cross incorrect

I agree to pay the cost of inverter repair due to:

\* expiration of the warranty period / \* warranty void

Before proceeding with the repair, service will inform by phone about the exact costs of the repair.

Please attach a copy of the purchase document (receipt or invoice) to the complaint.

The full regulations of service repairs can be found on our website [www.voltpolska.pl](http://www.voltpolska.pl)

## Proper disposal of the product (waste electrical and electronic equipment)

The marking placed on the product or in the texts related to it indicates that it should not be disposed of with other household waste at the end of its useful life. To avoid harmful effects to the environment and human health from uncontrolled disposal, please separate this product from other types of waste and recycle responsibly to promote the reuse of material resources as a continuing practice. For information on where and how to recycle this product in an environmentally safe manner, residential users should contact the retailer where they purchased the product, or their local government authority. Business users should contact

