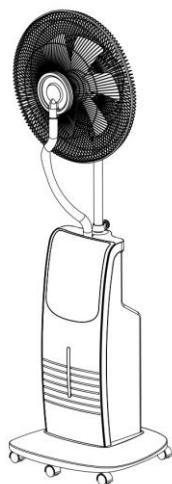
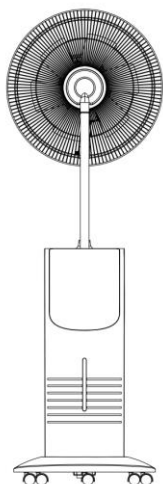


PRODUCT MANUAL

FAN WITH HUMIDIFIER

MIST COMFORT 90



VOLT
POLSKA

VOLT POLSKA Sp. z o.o.
ul. Bitwy pod Płowcami 76
81-771 Sopot
www.voltpolska.pl

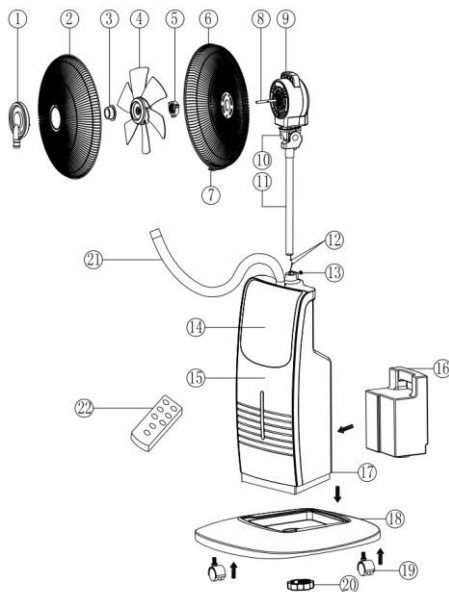
Thank you for purchasing **fan with humidifier MIST COMFORT 90 by VOLT Polska**. Please read this user manual before starting the device.

IMPORTANT SAFETY INSTRUCTIONS

1. Wet hands can not be used to contact power plugs. In order to avoid risk of electrical shock
2. When to start the fan, do not touch the film in the tank, or else you will feel painful or be in danger.
3. When the tank is dry, the water levels switch automatically cut to protect. To continue, just pour in some water.
4. Guard against debris into the net hood and mouth to avoid damage to wetting fan.
5. If the body of the body tilted, first cut off the power supply for further processing. Before cutting off the power, do not decompose the body to avoid any accidents.
6. 40°C or above water should not be used into water tank.
7. Do not put any metals, chemicals or others should not be put into water bottle holder to avoid abnormal atomization and danger.
8. Please replace the mosquito mat when switch it off 5 minutes later to make it cool.
9. The inflammable should not be put on the surface of mosquito repellent.
10. For infants the elderly or infirm, do not stay directly to the mist fan for a long time when it works.
11. The mist fan should work under the condition of rated power.
12. If the power line damages, must use components from the manufacturer or maintenance department to replace.
13. The mist fan should be put more than 30cm away from wall and far away from curtain and cloth.
14. Mist fan should not be used when on the incline ground.
15. Finger or others should not be put into air outlet or inlet to avoid machine broken easily.
16. Do not lean mist fan or turn over or will let the water spill out.
17. Pull out power line if not use mist fan.
18. Do not let children play with ice box.
19. Do not let Children, disabilities and common sense absence man to use this product unless under the guidance of professionals

Technical information

1. Misting Board
2. Front Grill
3. Blade Lock Nut
4. Blades
5. Grill Lock Nut
6. Back Grill
7. Grill Ring
8. Motor Shaft
9. Motor Cover
10. Motor Holder
11. Main Holder
12. Power Connection Line
13. Holder Fixed Screw
14. Control panel
15. Decorate Panel
16. Water Tank
17. Main Body
18. Base
19. Wheels
20. Base Lock Nut
21. Misting Tube
22. Remote Control



Assembling the appliance:

- Install the five castors on the base (18).
- Install the body into the base (18), and use the base lock nut (20) to screw on the base tightly.
- Connect power connection line (12), and put it into the main body (17), and tight up by holder fixed screw (16).
- Install the back grill (6), and tight up by grill lock nut (5) on the motor cover (9)
- Install the blades (4) on to the motor shaft (8), and anticlockwise by blade lock nut (3).

Installation

- Be sure to remove all packaging material from inside the appliance.
- Ensure that the fan is switched off from the supply mains before start any

sales@voltpolska.pl (58) 341-05-06 | przemek@voltpolska.pl (58) 341-38-80 | bartek@voltpolska.pl
(22) 100-42-99

installation or assembly operation.

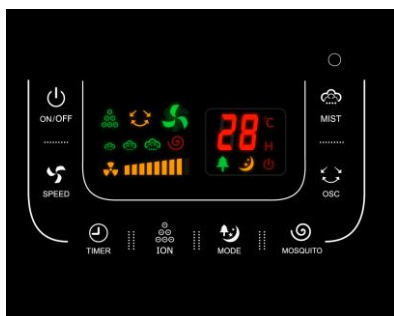
- The appliance should be used with its base fitted.
- Install misting board (1) on the front grill (2) and screw up by misting board lock screws.
- Put the front grill (2) and back grill (6) together, and screw to fasten by grill ring, and tight up by grill lock nut.

ATTENTION!

- Make sure the products unplugged from the mains before filling or refelling the water tank.
- Only use water in the water tank. Do not add any chemicals, oils or other additives.
- Only use cold or lukewarm water in the water tank. The water must not be warmer than 40°C.

Place the fan on a dry and stable surface and insert the plug on the socket; the unit will emit a short "BIP" sound indicating that power is supplied. For your convenience the unit can be operated by using control panel in the main body or by using remote control included.

Operation the appliance:



Touch panel



Remote control

Filling water:

- Push the water tank upward and remove the water tank.
- Unscrew the filler cap and fill with water.
- Screw the filler cap and put the water tank back in position.
- **CAUTION:** The temperature of water should not be 40°C above.

Operating the ice box:

- Turn off the appliance and pull out plug from the electrical outlet.
- Take out water tank, and then take out the ice box from appliance.
- Put the ice box into refrigerator for freezing
- After freezing, put the ice box on water holder make temperature lower.
- It can be reused.

Operating aroma tank:

- Take aroma case out on the body rear shell.
- Put several drops aroma liquid into the aroma case, and put the aroma case back in position.
- Slowly the aroma evaporates and be full of room while the mist fan working.

ON/OFF button:

- Firstly push ON/OFF button, the indicator light is on.
- Secondly push ON/OFF button, the wind speed is in the low level by default. Meanwhile, the indoor temperature shows on the panel.
- Thirdly push ON/OFF button, all stop working, all indicator lights off.

Speed button:

- Firstly push speed button, the wind speed is in the medium level
- Secondly push speed button, the wind speed is in the high level
- Thirdly push speed button, the wind speed returns to the low level.

Mode button:

- Natural mode → Sleep mode → Normal mode

Natural mode : The wind imitate the blow of natural wind based on strong and soft wind.

Sleep mode: the first half hour after running as strong and soft natural wind, it becomes med natural wind and the second half hour it changes to soft natural wind until the end of preset time.

Normal mode: The wind blow based on Low/Med/High speed.

Mist function:

- Mist function can be used separately, or worked together with the fan.
- Firstly push Mist button, the mist spray in low volume.
- Secondly push Mist button, the mist spray in medium volume.

- Thirdly push Mist button, the mist spray in high volume.
 - Note: While the mist function work normally, the indicator light on the body shell is blue, while the water is lacking, the indicator light is red.
- plus or minus pole.

Oscillation function:

- The oscillation function makes it possible to direct the flow from the apparatus so that it automatically alternates over a range of 75°
- To activate this function, push the OSC button. The yellow light of OSC on.
- Press it again to stop oscillation, yellow light of Osc off.
- Ionic function:
- Mist function can be used separately, or worked together with the fan.
- The appliance can generate negative ions generated by the ionizer emanate from the unit throughout the room and cause dust, pollen, pet dander etc to clump together and drop out of the air.
- Push the ion button, green light of Ion function on,
- Push it again to stop working, the green light of Ion function off.

Mosquito repellent function

- Mosquito repellent function can be used separately, or worked together with the fan.
- Put the mosquito repellent tablet (not included with the product) into its hole on the body rear shell.
- Push Mosquito button red light of mosquito repellent on, to avoid the mosquitoes annoy.
- Push it again to stop working, red light of mosquito repellent off.

Note:

- Turn off the power when you replacing the mosquito repellent tablet, wait for 10 minutes then replacement in order to avoid burns or electric shock.
- Do not put the mosquito repellent tablet in contact with eyes or mouth. If put in mouth by accident, wash mouth and seek medical care immediately.

- **Note:** While the mist function work normally, the indicator light on the body shell is blue, while the water is lacking, the indicator light is red.

plus or minus pole.

CLEANING AND MAINTENANCE

NOTED: Before cleaning the appliance always disconnect the power plug from the receptacle.

1. DO NOT dip the device in water, or splash it with any other liquids.
2. DO NOT use solvents or any other chemical products for cleaning it. When you do not use it, after cleaning it, store the fan in a dry place.
3. When you have finished using the fan at the end of the season, wipe off any dust to maintain it in good working order for the next season; if necessary disassemble the grille and remove the fan; clean them with a soft damp cloth. Remove the water tank and clean it with lukewarm water; before replace the water tank in the unit make sure it is completely dry. Draining the water out of the unit placing a container underneath the water drain (indicated with an arrow in below picture) and let any water remaining in the water reservoir drain out.

SPECIFICATION

Power: 90W

Voltage: 220V-240V / 50Hz



WARRANTY CARD

DATA OF PURCHASE	
SHIPPING ADDRESS	
SIGNATURE/STAMP	
DAMAGE DESCRIPTION	
SERVICE COMMENTS	

FILL IN IF NEEDED

(*) Cross incorrect

I agree to pay the cost of inverter repair due to:

* expiration of the warranty period / * warranty void

Before proceeding with the repair, service will inform by phone
about the exact costs of the repair.

Please attach a copy of the purchase document (receipt or invoice)
to the complaint.

The full regulations of service repairs can be found on our website
www.voltpolska.pl

